

FILENAME: G:\env\project\23573\drawings\3rd EIA-V8\CAP\Figure7-3-1.dgn
 Maps reproduced with permission of The Director of Lands. (C) Hong Kong Government.

REV	DATE	BY	SUB	APP	DESCRIPTION
△	DEC 2003	SW	FC	ST	EIA REPORT
△	NOV 2003	SW	FC	ST	EIA REPORT
△	30MAY 2003	SW	FC	ST	EIA REPORT
△	7MAR 2003	SW	FC	ST	EIA REPORT (2ND DRAFT)
△	11OCT 2002	SW	FC	ST	EIA REPORT (1ST DRAFT)

DESIGNED BY	SW
DRAWN BY	RL
CHECKED BY	FC
IN CHARGE	ST
DATE	5 DEC 2003

New Railway Projects

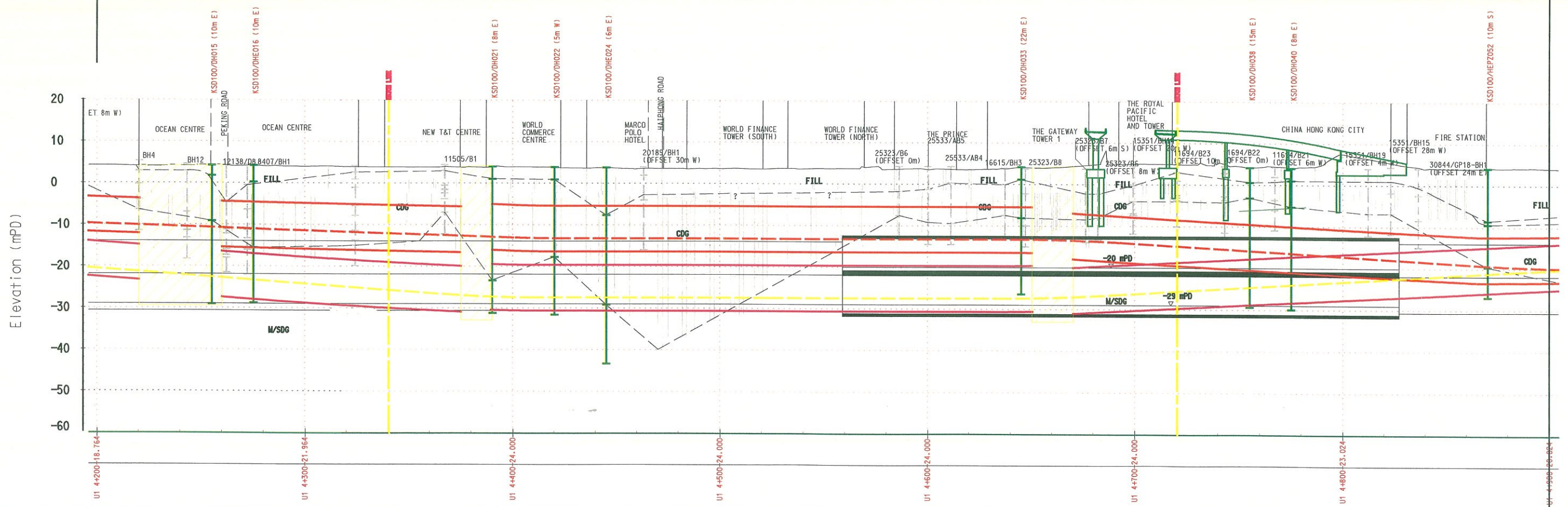
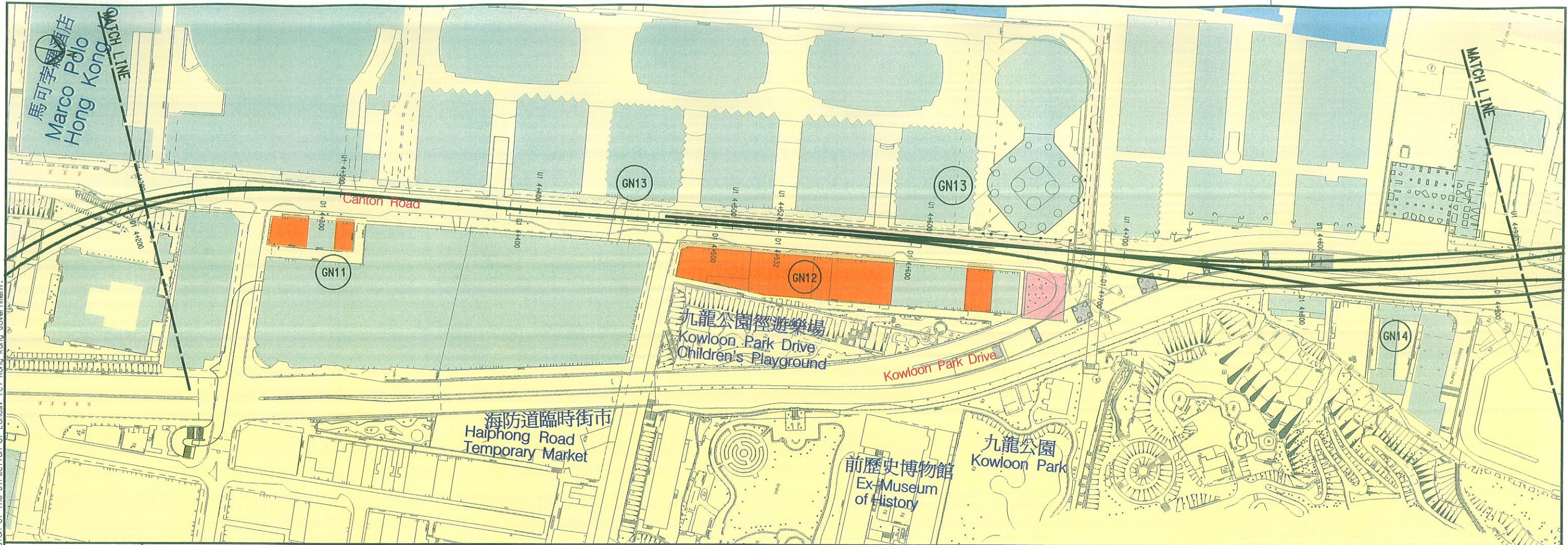
新鐵路策劃

Ove Arup & Partners Hong Kong Limited

KOWLOON SOUTHERN LINK KSL GSA-5100
EIA & ASSOCIATED SERVICES
LOCATION OF REPRESENTATIVE
OPERATIONAL GROUND BOURNE NOISE
SENSITIVE RECEIVERS ALONG THE KSL
ALIGNMENT

CADD FILENAME	CADD DATE
SCALE	1:2000 @ A3
DRAWING NUMBER	FIGURE 7-3-1
SHEET NO	1 OF 4
STAGE CODE	P
REV	E

Maps reproduced with permission of The Director of Lands. (C) Hong Kong Government.



REV	DATE	BY	SUB	APP	DESCRIPTION
△	DEC2003	SW	FC	ST	EIA REPORT
△	NOV2003	SW	FC	ST	EIA REPORT
△	30MAY2003	SW	FC	ST	EIA REPORT
△	7MAR2003	SW	FC	ST	EIA REPORT (2ND DRAFT)
△	11OCT2002	SW	FC	ST	EIA REPORT (1ST DRAFT)

DESIGNED BY	SW
DRAWN BY	RL
CHECKED BY	FC
IN CHARGE	ST
DATE	5 DEC 2003



New Railway Projects
新鐵路策劃

Ove Arup & Partners Hong Kong Limited



KOWLOON SOUTHERN LINK KSL GSA-5100
EIA & ASSOCIATED SERVICES
LOCATION OF REPRESENTATIVE
OPERATIONAL GROUNDBORNE NOISE
SENSITIVE RECEIVERS ALONG THE KSL
ALIGNMENT

CADD FILENAME	CADD DATE
SCALE	1:2000 @ A3
DRAWING NUMBER	FIGURE 7-3-2
SHEET NO	STAGE CODE REV
2 OF 4	P E